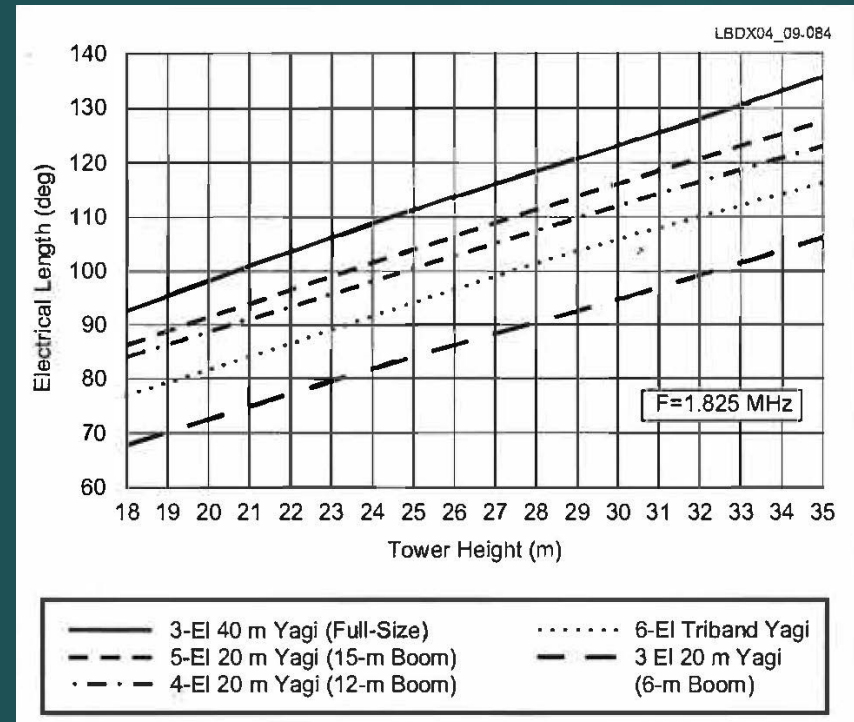


Shunt Feed Your Tower !

JOEL HARRISON, W5ZN

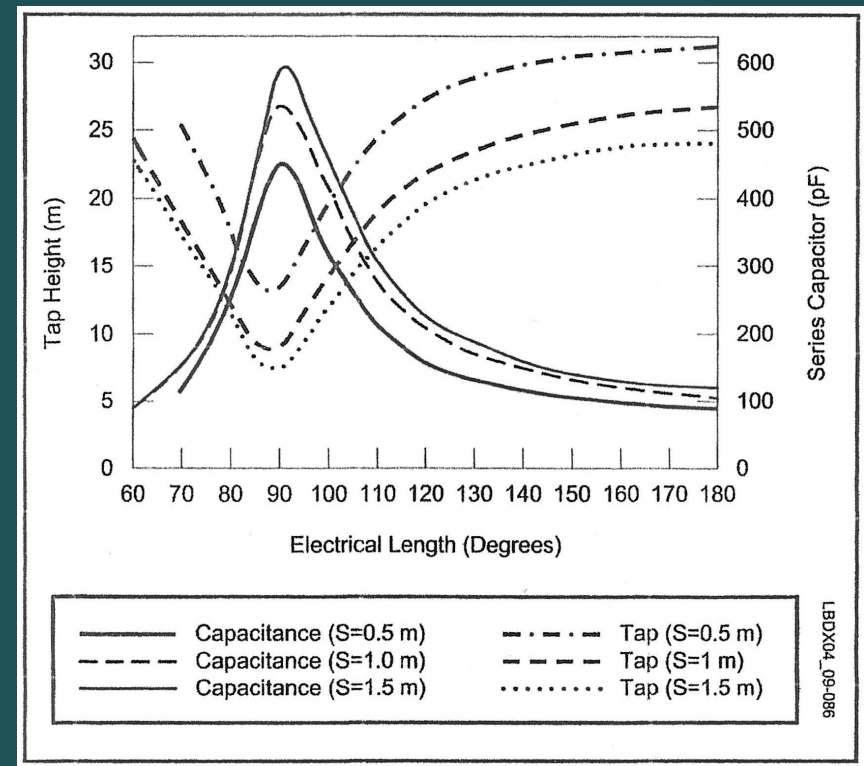
What is the resonant Frequency of my tower?

It won't be 50 Ohms!!

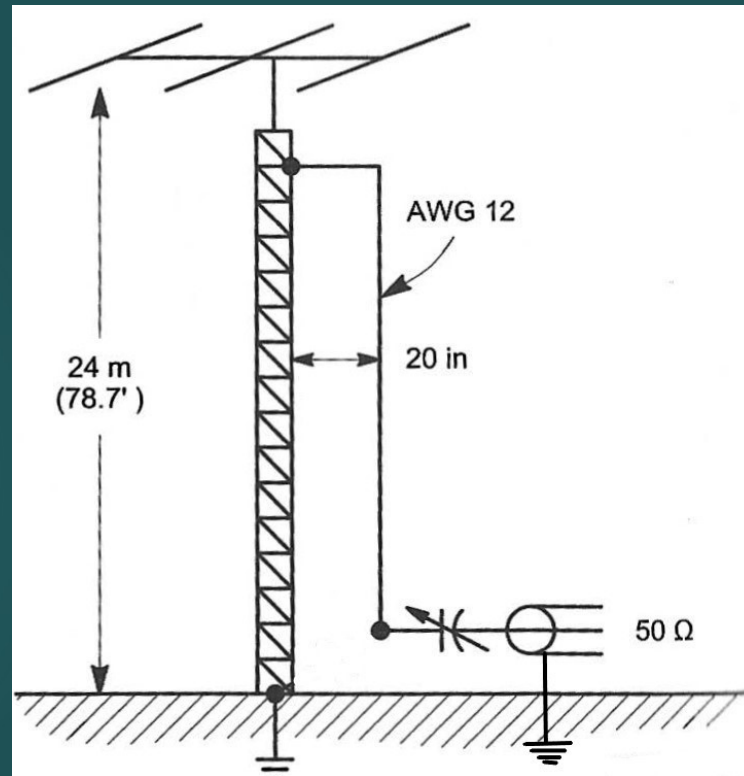


The Shunt Wire

- Where should I connect the shunt wire
- How far from the tower should the shunt wire be?



Feed the Tower!

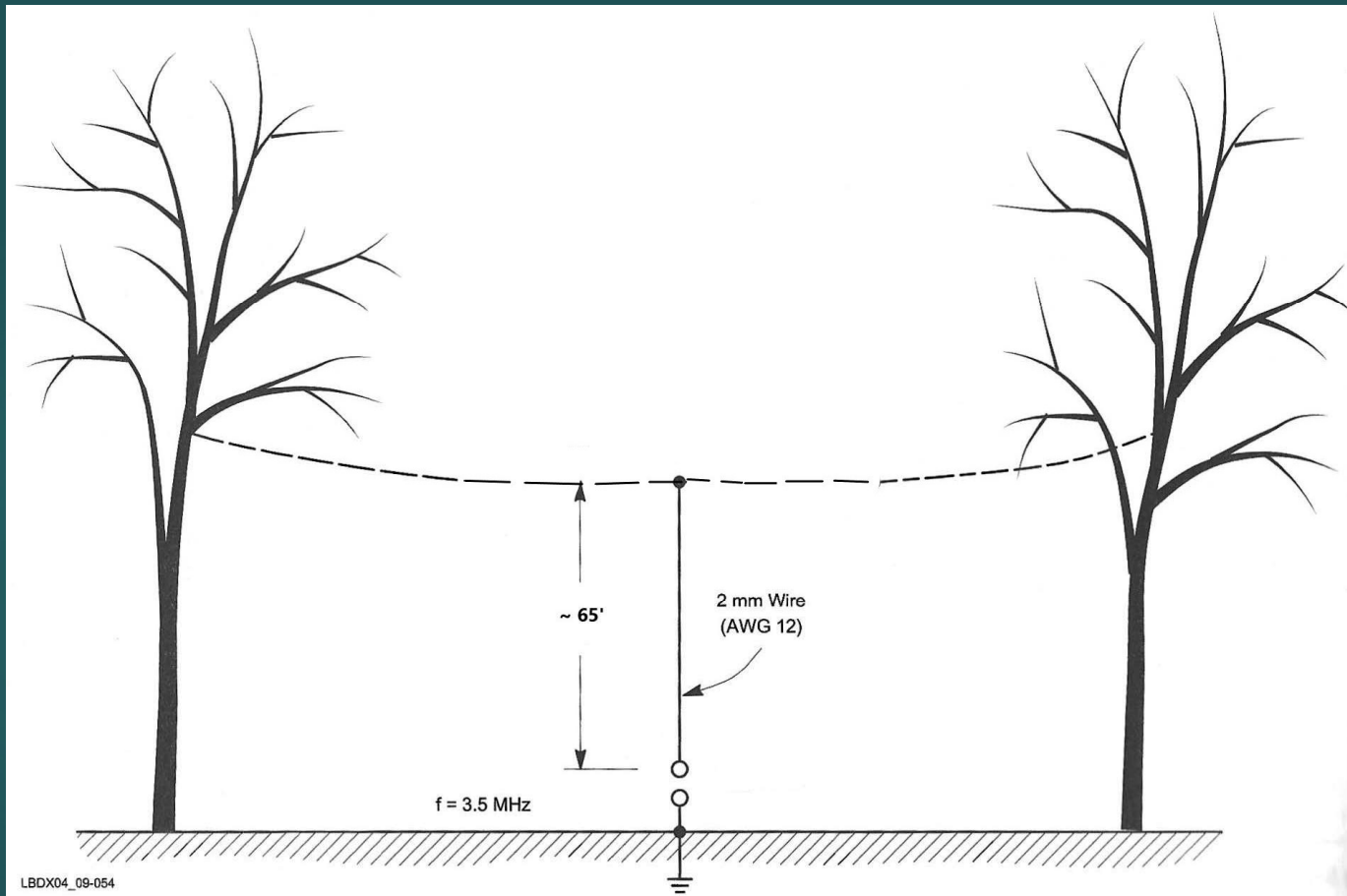


Radials

- ▶ **How many radials do I need?**
 - ▶ 16 will be amazing but 8 will work
- ▶ **Do I have to bury them**
 - ▶ No but if you do don't bury them too deep
 - ▶ Don't lay them under fresh water!!!!
- ▶ **I can't leave radials in yard year round**
 - ▶ Or "my wife want let me"

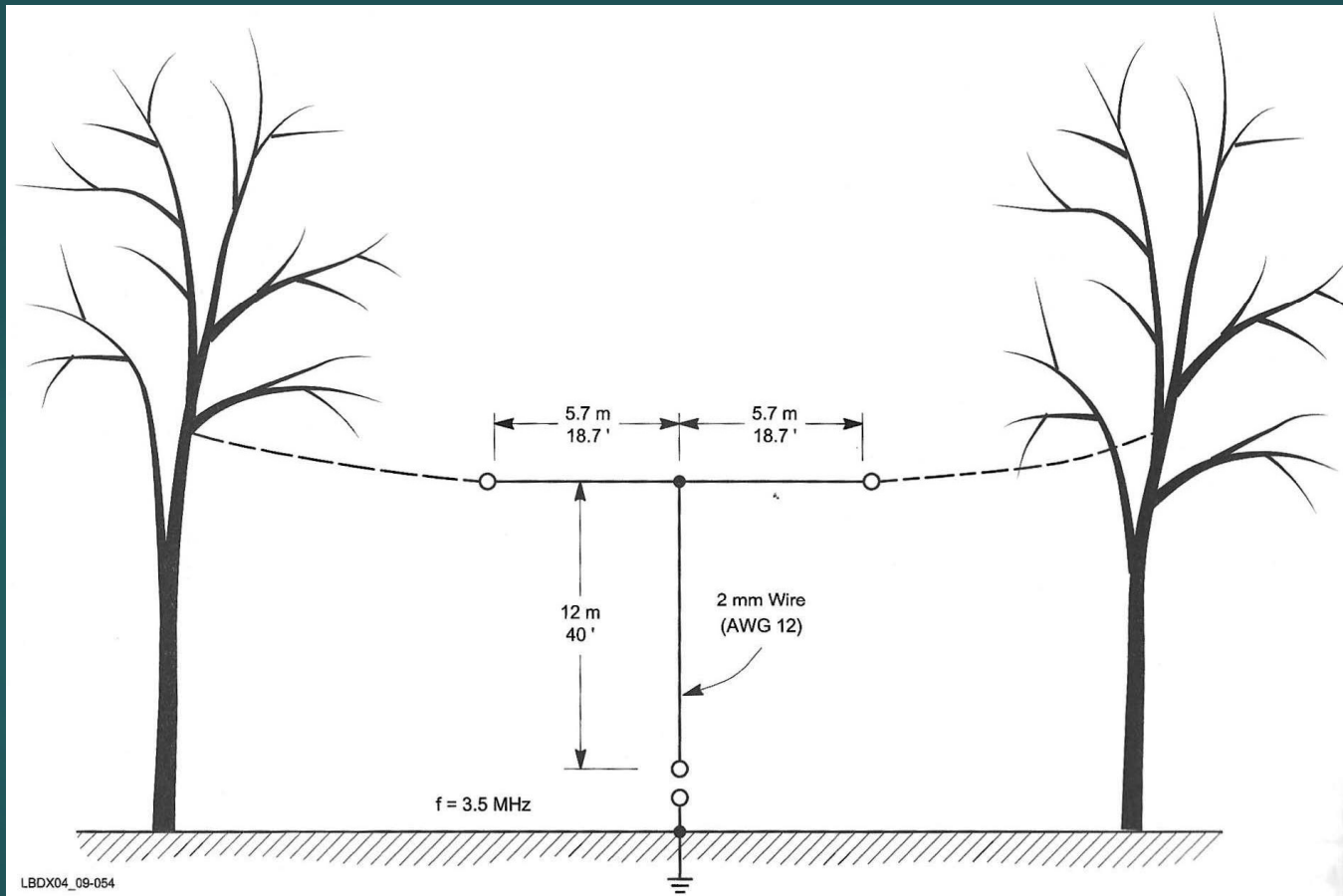


But I don't have a tower!



LBDX04_09-054

I can't hang a wire 65' high



Tuning for resonance

- ▶ **Use an antenna analyzer**
 - ▶ Don't look at SWR
 - ▶ Select "All Parameters"



Tuning for resonance

- ▶ Adjust antenna length for zero reactance



Bonus Slide

- ▶ Test Equipment – the two most valuable instruments beyond a VOM

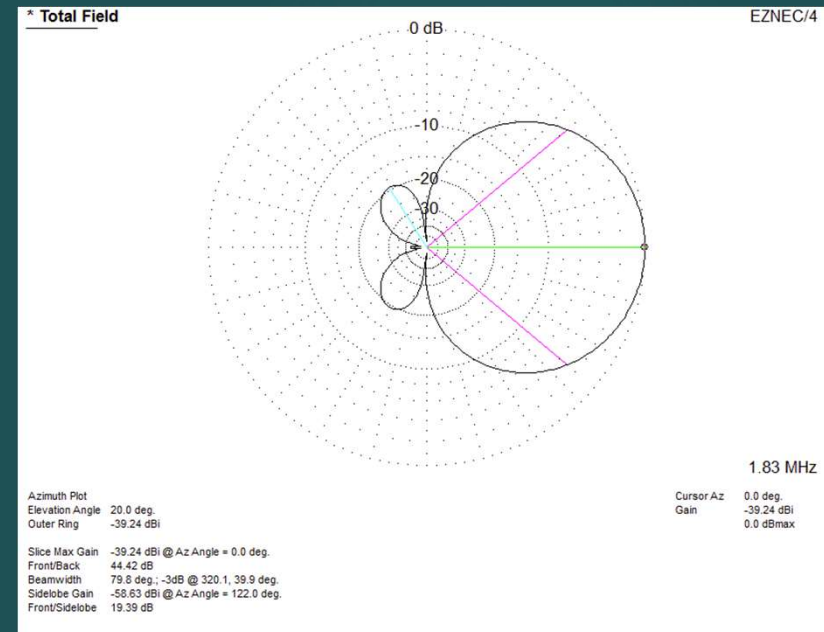
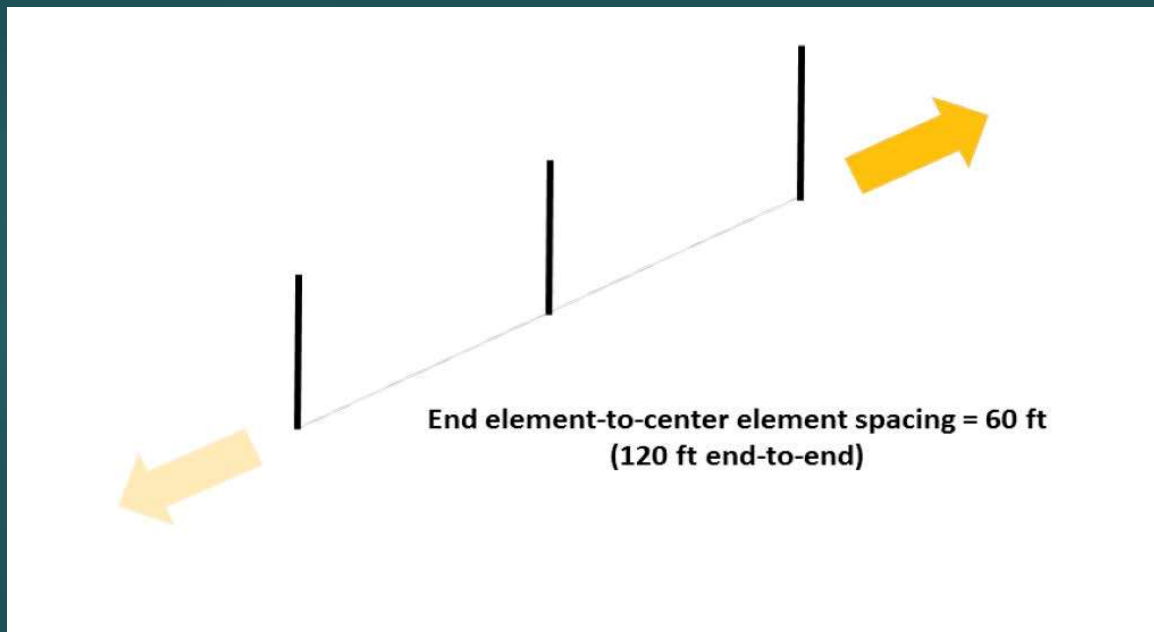


Receive Antennas

- ▶ If you're going to put up a nice TX antenna, you'll want to improve you RX
- ▶ **Most popular – Beverage 580 ft** (one direction)
- ▶ **Options:**
 - ▶ HiZ-8 100 ft diameter (8 directions @ 45°)
 - ▶ BSEF-8 180 ft diameter (8 directions @ 45°)
 - ▶ YCCC-9 120 ft diameter (8 directions @ 45°)

Best option for single direction

Performance equal to 580 ft Beverage!





GET IN THERE AND WORK 'EM!!